

MODEL #	AVG. CFM @ 90 FPM	BTU/HR.	POWER REQ'D AMPS @ 115V	SHIP WT. LBS. (KG)
LF 630 10554	1350	3230	7.5	760 (344.7)

NOTES:

WELDED METAL CABINET, WITH EXTERIOR FINISHED IN POLYURETHANE ENAMEL.

STAINLESS STEEL, ISOLATED WORK SURFACE.

ADJUSTABLE LEVELING FEET ON WORK BENCH.

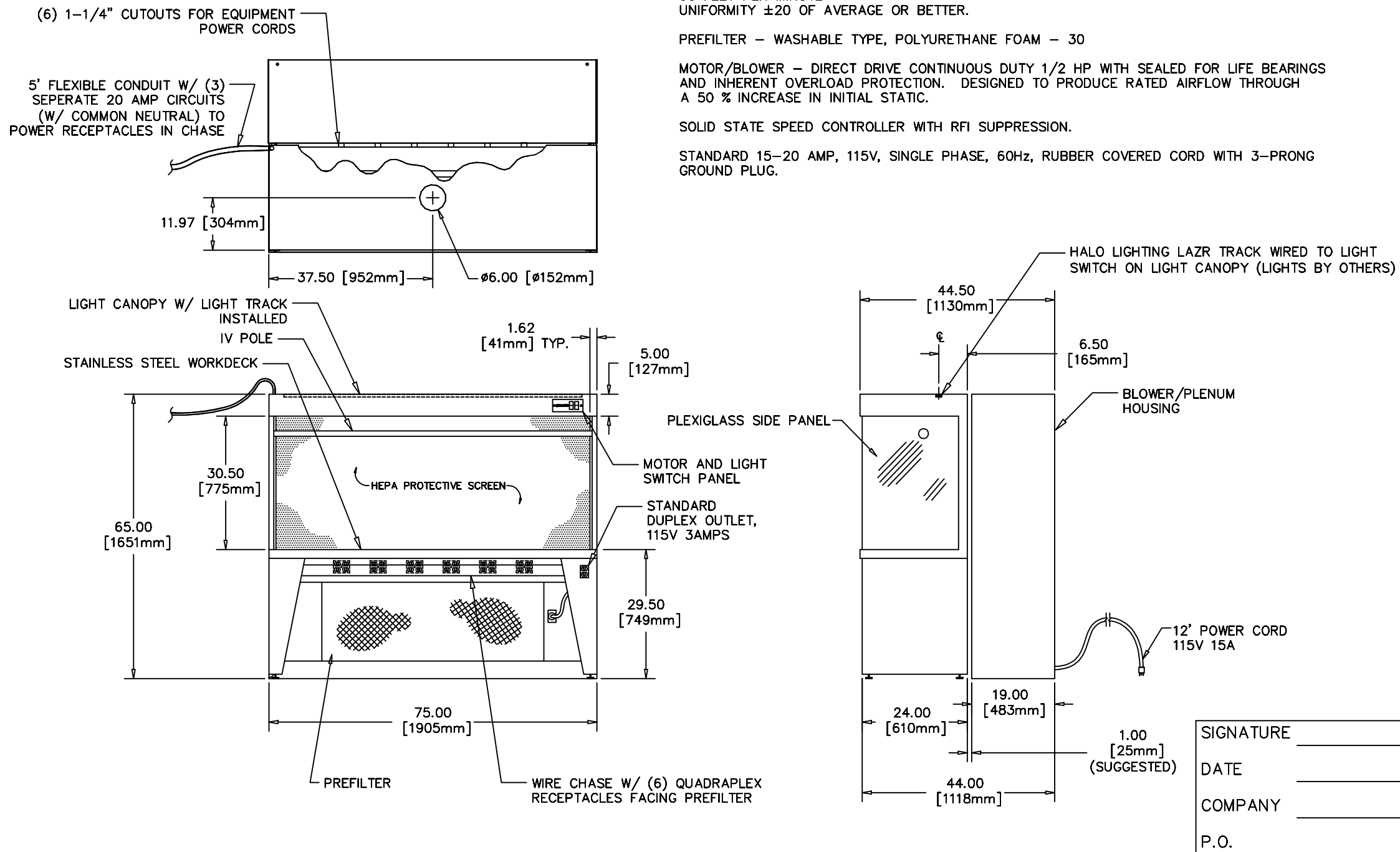
FILTER - ALUMINUM FRAMED HEPA WITH A MINIMUM EFFICIENCY OF 99.995
90 FEET PER MINUTE
UNIFORMITY ±20 OF AVERAGE OR BETTER.

PREFILTER - WASHABLE TYPE, POLYURETHANE FOAM - 30

MOTOR/BLOWER - DIRECT DRIVE CONTINUOUS DUTY 1/2 HP WITH SEALED FOR LIFE BEARINGS AND INHERENT OVERLOAD PROTECTION. DESIGNED TO PRODUCE RATED AIRFLOW THROUGH A 50 % INCREASE IN INITIAL STATIC.

SOLID STATE SPEED CONTROLLER WITH RFI SUPPRESSION.

STANDARD 15-20 AMP, 115V, SINGLE PHASE, 60Hz, RUBBER COVERED CORD WITH 3-PRONG GROUND PLUG.



101 McNeill Rd.
Sanford, NC 27330
PHONE: 1 . 800 . 884 . 0002
FAX: 1 . 800 . 458 . 2379
www.enviroco.com
email: enviroco@enviroco.com

**LF-630, 115V, CUSTOM
MOUSE TRANSUTERINE MICROINJECTION
BRIGANDE**

UNLESS SPECIFIED,
ALL DIMENSIONS
ARE IN INCHES.
TOLERANCE
.X .XX .XXX
.1 .03 .010
UNLESS NOTED

THIS DRAWING IS THE PROPERTY
OF ENVIRCO, AND MAY NOT
BE REPRODUCED OR PUBLISHED
WITHOUT AUTHORIZATION FROM
ENVIRCO.
COPYRIGHT 2010 ENVIRCO

DRAWING NO: ER10-0046	
DATE: 10-29-10	DRAWN BY: AMO
REV: A	REV DATE: 11-15-10
DESIGN PLAN:	