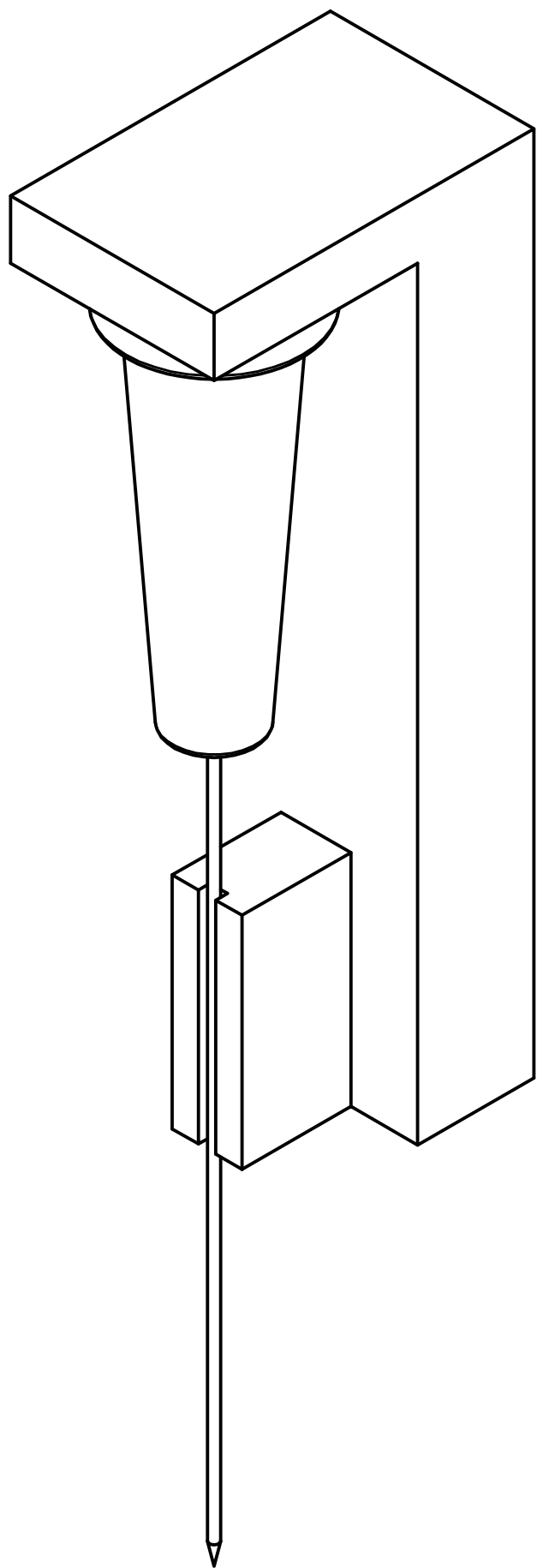
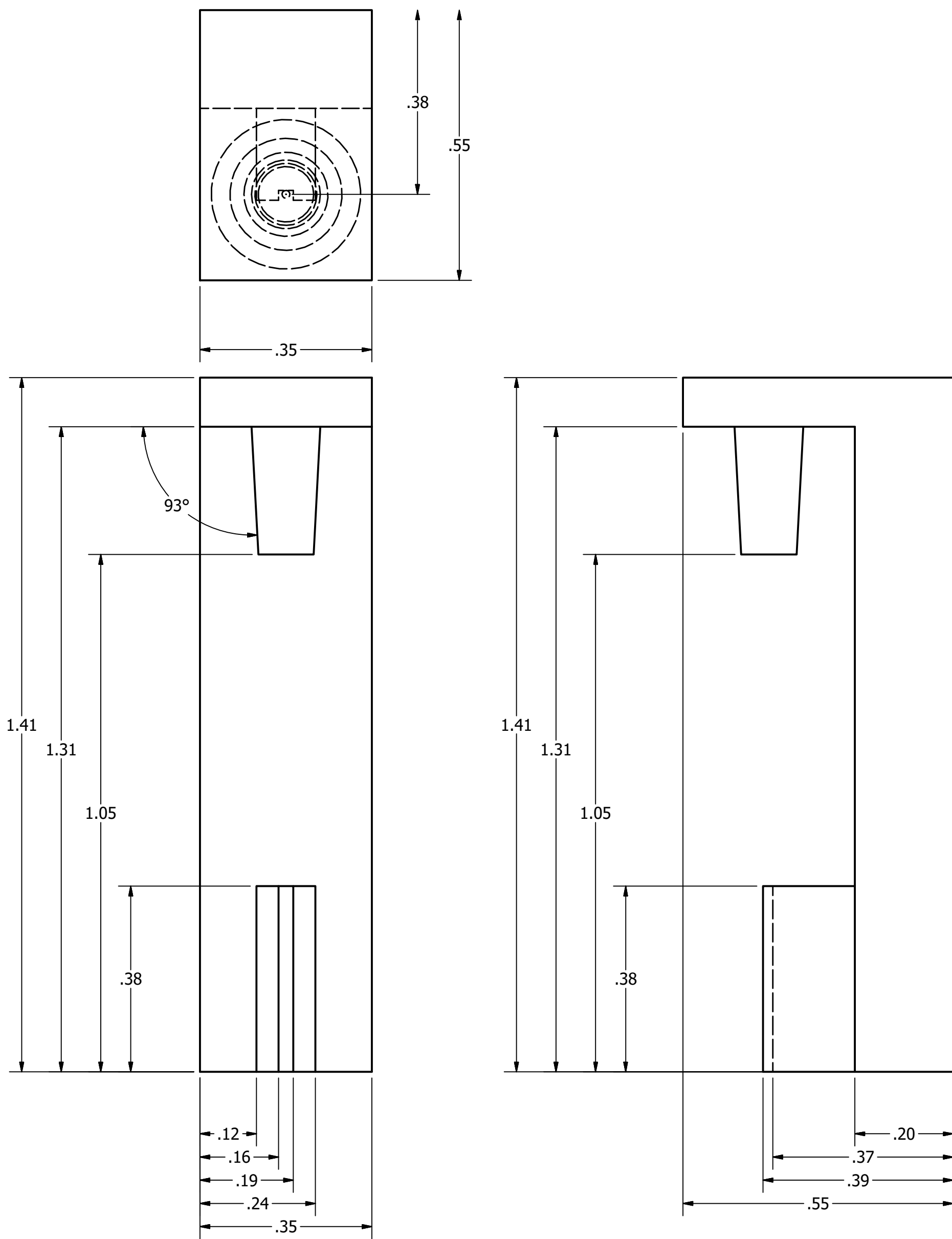


Jig, Pin Gauge



DIMENSIONS ARE IN INCHES		AUTHOR		DATE	
UNLESS OTHERWISE SPECIFIED, TOLERANCES ARE: NO DECIMAL PLACE: +/- 0.50 ONE DECIMAL PLACE: +/- 0.25 TWO DECIMAL PLACE: +/- 0.10 ANGULAR: +/- 5°		Robert Zondervan		5/3/2018	
		TITLE Jig, Pin Gauge			
		PROJECT JOVE - Fracture Apparatus Design and Protocol Optimization			
		FIGURE S13		SCALE 5 : 1	SHEET 13