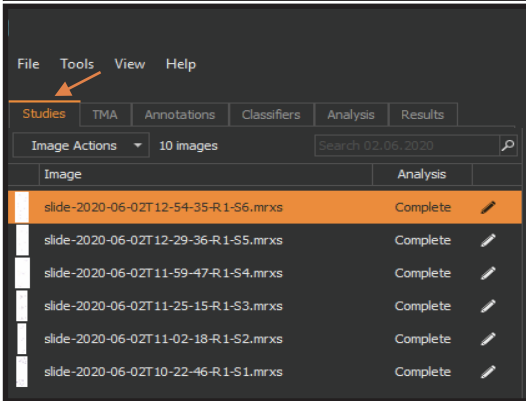
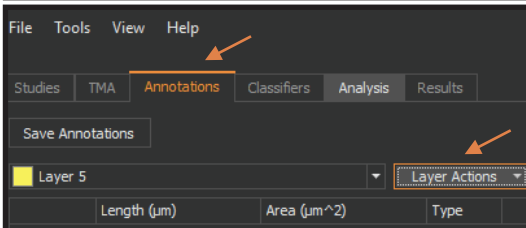


Digital Slide Scanner Software Procedure

STEP 1 - Open files



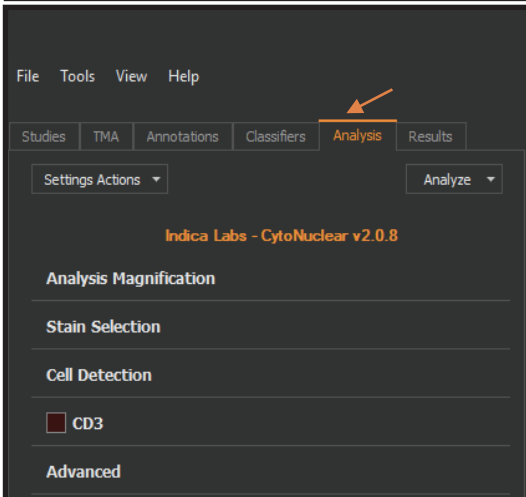
STEP 2 - Design annotations



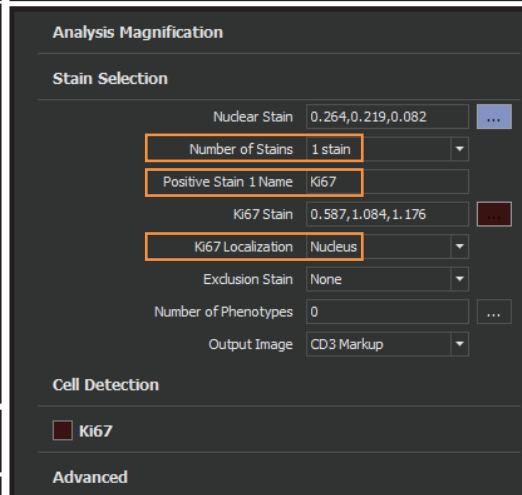
STEP 3 : Toolbar



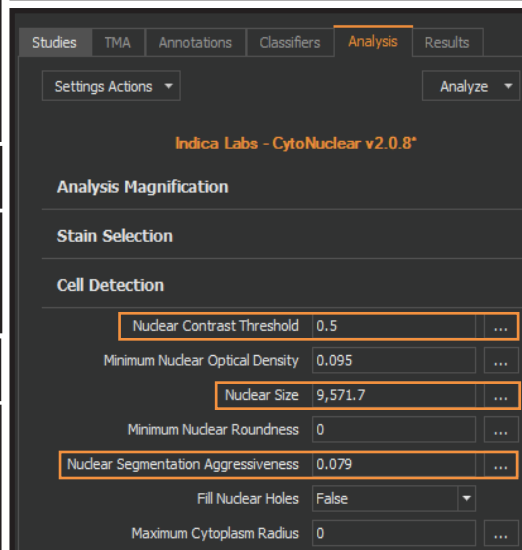
STEP 4 - Set-up sample analysis



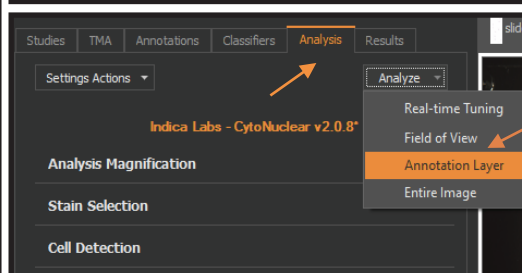
STEP 4.1 - Detect Staining(s)



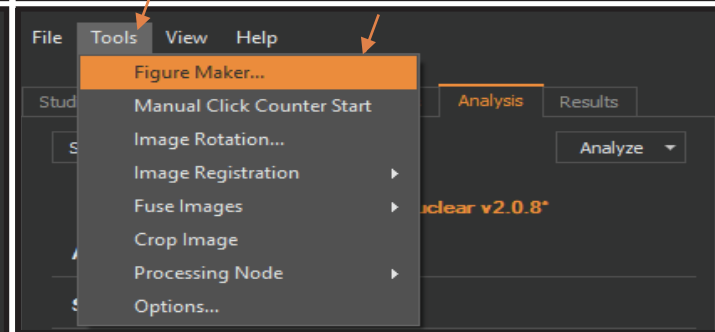
STEP 4.2 - Detect cells



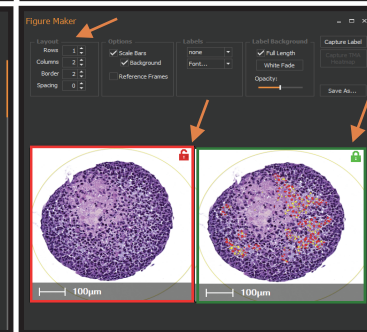
STEP 5 - Run the sample analysis



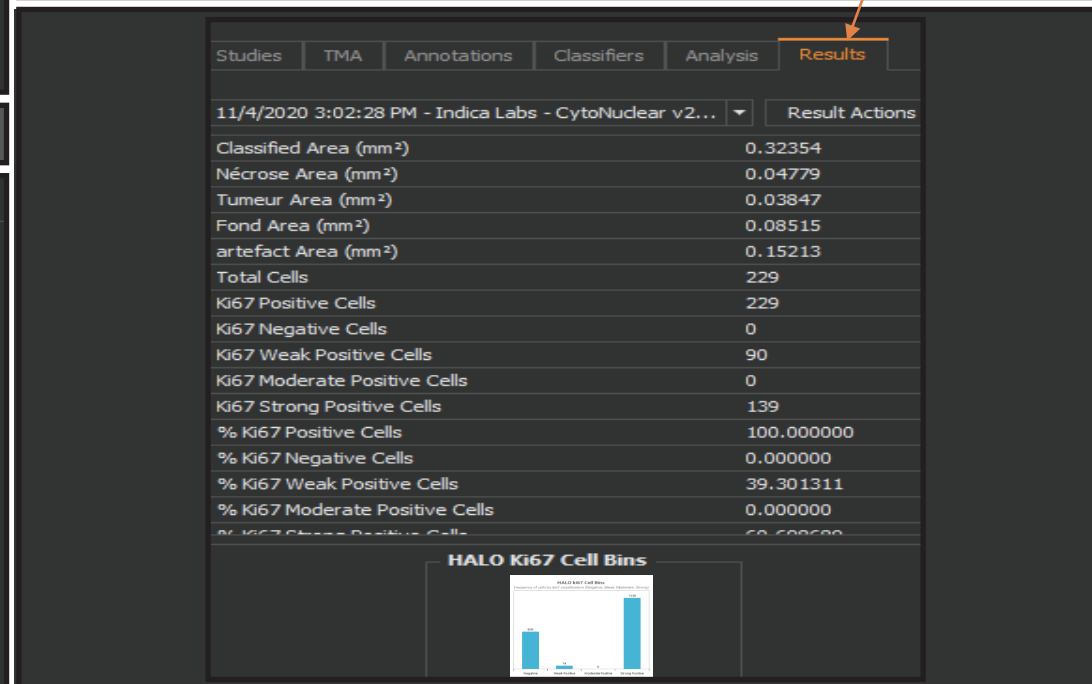
Step 6 - Generate Figure



Step 6.1 - Setup & Lock figure



STEP 7 : Explore data



STEP 8 : Export data

