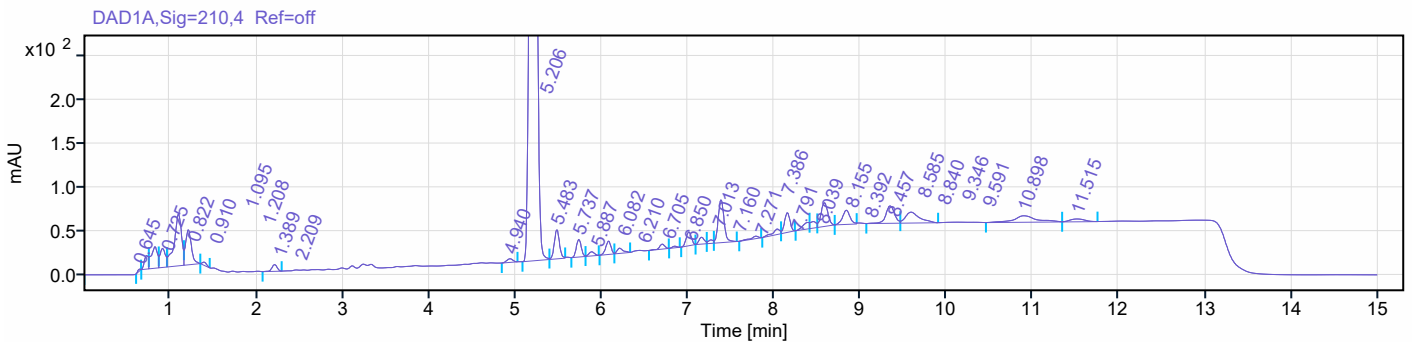
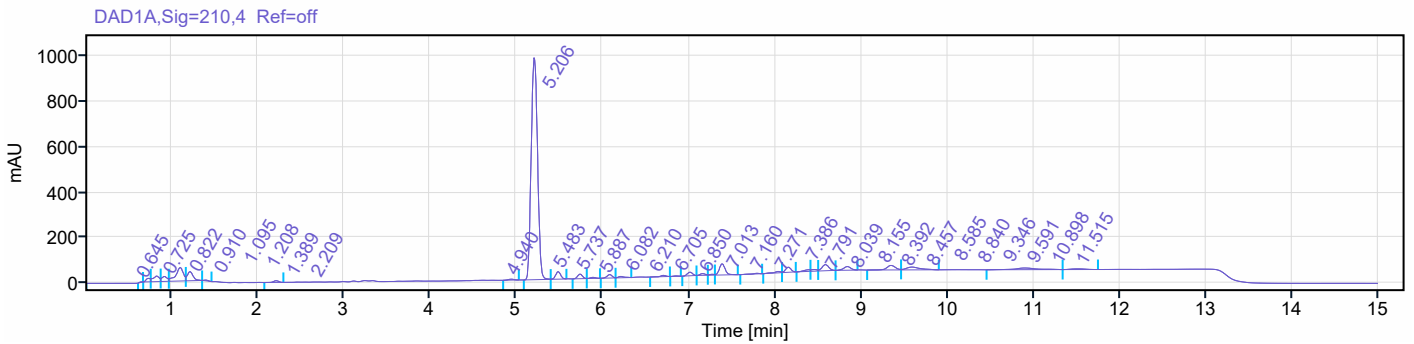


Single Injection Report

Sample Name: C2021236-SM1-H221655-014-IPC2 **Project Name:** C2021236
Acq. method: A0-3.amx **Operator:** liuting
Processing method: *A0.pmx **Location:** P1-A7
Instrument: CM-ARD-HPLC-11 **Injection date:** 2022-07-07 17:58:55+08:00
Processing Date: 2022-07-08 08:52:05+08:00 **Inj. volume:** 1.0 µL
Run Time: 15.0
Data File Directory: /non-GMP/CDMO/C2021236/Results/2022/Jul/20220707/CM-ARD-HPLC-11-20220707
 161628.rslt



Signal: DAD1A,Sig=210,4 Ref=off

No.	Name	RT [min]	Area [mAU*min]	Height [mAU]	Plates USP	Tail Factor USP	Resolution USP	Area [%]
1		0.645	4.69	1.92	2337	0.93		0.06
2		0.725	51.35	15.38	185	0.78	0.60	0.68
3		0.822	125.15	24.62	461	0.80	0.55	1.66
4		0.910	96.15	21.90	580	1.09	0.57	1.27
5		1.095	359.73	59.49	905	0.73	1.26	4.76
6		1.208	188.65	40.17	1381	1.64	0.82	2.50
7		1.389	12.31	3.47	3571	0.92	1.61	0.16
8		2.209	31.95	7.66	6287	1.01	8.01	0.42
9		4.940	19.65	4.07	22549	1.22	22.44	0.26
10		5.206	5036.29	981.14	22944	1.09	1.98	66.62

Single Injection Report

No.	Name	RT [min]	Area [mAU*min]	Height [mAU]	Plates USP	Tail Factor USP	Resolution USP	Area [%]
11		5.483	138.33	33.29	40338	1.23	2.27	1.83
12		5.737	79.67	20.14	46426	1.16	2.35	1.05
13		5.887	20.88	4.71	38010	1.25	1.29	0.28
14		6.082	63.91	15.22	46450	0.96	1.71	0.85
15		6.210	29.00	5.93	43022	1.65	1.09	0.38
16		6.705	23.56	5.62	61589	1.26	4.33	0.31
17		6.850	6.30	1.74	77235	1.18	1.42	0.08
18		7.013	66.62	15.74	58872	1.20	1.49	0.88
19		7.160	33.18	7.76	58235	1.11	1.25	0.44
20		7.271	15.52	3.93	38401	0.82	0.85	0.21
21		7.386	233.17	49.08	57456	1.24	0.83	3.08
22		7.791	15.56	2.70	70192	1.10	3.38	0.21
23		8.039	35.96	6.15	58536	0.81	1.97	0.48
24		8.155	99.48	22.48	75235	1.06	0.95	1.32
25		8.392	38.65	7.36	7708	0.62	0.93	0.51
26		8.457	35.55	7.46	9801	1.00	0.18	0.47
27		8.585	150.43	27.19	55007	1.23	0.52	1.99
28		8.840	97.49	16.20	52260	1.11	1.68	1.29
29		9.346	139.60	19.86	44296	1.01	3.05	1.85
30		9.591	140.87	12.44	19042	1.60	1.08	1.86
31		10.898	132.89	7.37	13293	1.18	3.98	1.76
32		11.515	37.62	3.17	21685	1.25	1.79	0.50